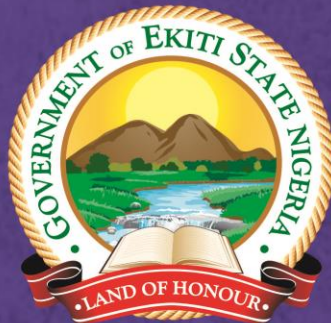
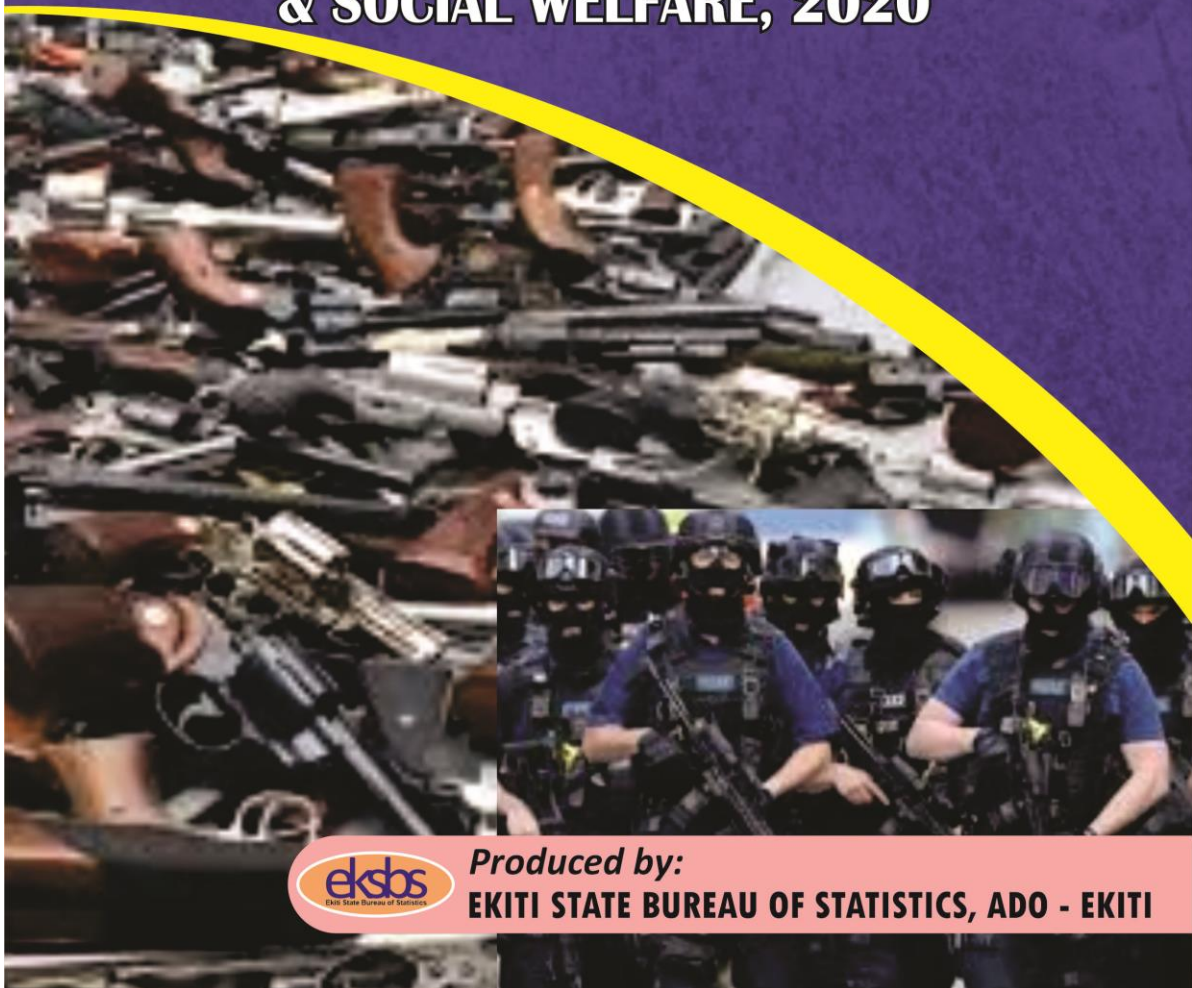


EKITI STATE OF NIGERIA



...Ilẹ̀ Iyì, Ilẹ̀ Èyẹ

DIGEST OF SECURITY, JUSTICE & SOCIAL WELFARE, 2020



eksbs
Ekiti State Bureau of Statistics

Produced by:

EKITI STATE BUREAU OF STATISTICS, ADO - EKITI

FOREWORD

This publication is one of its kind in the series of the Digest of Security, Justice and Social Welfare Statistics produced by the State Bureau of Statistics. The edition covers a wide scope as it contains information on Justice and Security, Nigeria Correctional Service, Federal Road Safety Corps (FRSC), Nigeria Security and Civil Defense Corps (NSCDC), Vigilante Group of Nigeria (VGN) and Ekiti State Traffic Management Agency (EKSTMA).

The primary objective of the publication is to showcase the activities of Social Welfare, Justice and Security Institutions in the State with the aims of providing useful information to the prospective users such as government and researchers. The publication is divided into four major sections namely: Justice, Correctional Services, Security and Social Welfare.

I wish to appreciate the effort of various establishments such as High Court of Justice, Nigeria Correctional Service, Ministry of Women Affairs and Gender Empowerment, Federal Road Safety Corps, Nigeria Security and Civil Defense Corps, Vigilante Group of Nigeria and Ekiti State Traffic Management Agency for their cooperation in supplying the required information. We count on their continued support in years ahead.

The publication will in no doubt assist planners, policy makers and researchers in their decisions as we also welcome observations and remarks that can lead to improvement in

The Statistician General,
Ekiti State Bureau of Statistics,
State Secretariat,
Ado-Ekiti.

TABLE OF CONTENTS

S/N	TITLE	PAGE
	FORWARD	1
	TABLE OF CONTENTS	2-3
	SECTION ONE	4-7
1.1	DISTRIBUTION OF OFFICERS AND STAFF OF NIGERIA POLICE FORCE BY LOCAL GOVERNMENT IN EKITI STATE, 2020	8
1.2	NUMBER OF CASES REPORTED, SETTLED AND TRANSFERRED TO COURT BY NIGERIA POLICE FORCE EKITI STATE, 2020	9
1.3	TYPE OF OFFENCE AND NUMBER OF PERSONS INVOLVED BY SEX RECORDED BY NIGERIA POLICE FORCE IN EKITI STATE, 2020	10
1.4	NUMBER OF CASES REPORTED TO NIGERIA POLICE FORCE BY TYPE OF OFFENCE AND SEX OF THE ACCUSED PERSONS IN EKITI STATE, 2020	11
1.5	NUMBER OF NIGERIA SECURITY AND CIVIL DEFENCE CORPS (NSCDC) STATIONS AVAILABLE IN EKITI STATE BY LOCAL GOVERNMENT, 2020	12
1.6	DISTRIBUTION OF NIGERIA SECURITY AND CIVIL DEFENCE CORPS (NSCDC) STATIONS BY SENATORIAL DISTRICT IN 2020	13
1.7	DISTRIBUTION OF NIGERIA SECURITY AND CIVIL DEFENCE CORPS (NSCDC) BY CADRE AND SEX IN EKITI STATE, 2020	14
1.8	NUMBER OF CASES AND TYPE OF OFFENCE HANDLED BY NIGERIA SECURITY AND CIVIL DEFENCE CORPS (NSCDC) EKITI STATE COMMAND, 2020	15
1.9	NUMBER OF CASES REPORTED, CASES SETTLED AND CASES TRANSFERRED TO COURT BY NIGERIA SECURITY AND CIVIL DEFENCE CORPS (NSCDC) EKITI STATE, 2020	16
1.10	DISTRIBUTION OF STAFF OF FEDERAL ROAD SAFETY CORPS (FRSC) BY CADRE IN EKITI STATE, 2020	17
1.11	NUMBER OF FRSC BASE AVAILABLE IN EKITI STATE BY LGA, 2020	18
1.12	NUMBER OF TRAFFIC OFFENDERS RECORDED BY FRSC, 2020	19-20
1.13	RECORD OF EKITI TRAFFIC MANAGEMENT AGENCY (EKSTMA) BY STATIONS AND BY LOCAL GOVERNMENT AREA IN EKITI STATE, 2020	21
1.14	PERCENTAGE DISTRIBUTION OF OFFICERS AND STAFF OF EKITI STATE TRAFFIC MANAGEMENT AGENCY (EKSTMA) 2020	22
1.15	MONTHLY DISTRIBUTION OF TRAFFIC OFFENDERS BY EKITI STATE TRAFFIC MANAGEMENT AGENCY, 2020	23

	SECTION TWO	35-36
2.1	DISTRIBUTION OF FAMILY CASES BY STATUS AND ZONE IN EKITI STATE, 2020	37
2.2	BENEFICIARIES OF REFORMED PROGRAMME BEEN COORDINATED BY MIN. OF WOMEN AFFAIRS, SOCIAL WELFARE AND GENDER EMPOWERMENT IN EKITI STATE, 2020	38
2.3	JUVENILE CASES AGAINST REGULATION HANDLED BY WOMEN AFFAIRS, SOCIAL WELFARE AND GENDER EMPOWERMENT BY NATURE OF OFFENCE IN EKITI STATE, 2020	39
2.4	NUMBER OF JUVENILE CASES ENTERTAINED BY THE SOCIAL WELFARE DEPARTMENT BY NATURE OF OFFENCE IN EKITI STATE, 2020	40
	SECTION THREE	41-43
3.1	CAPACITY AND ACTUAL NUMBER OF INMATES IN NIGERIA CORRECTIONAL SERVICE, IN EKITI STATE, 2020	44
3.2	DISTRIBUTION OF STAFF IN NIGERIA CORRECTIONAL SERVICE, BY SEX AND PROFESSION, IN EKITI STATE, 2020	45
3.3	AVAILABLE FACILITY IN NIGERIA CORRECTIONAL SERVICE, IN EKITI STATE, 2020	46
3.4	NUMBER OF PERSONS REMANDED IN NIGERIA CORRECTIONAL SERVICE, BY SEX, MONTH AND NATURE OF OFFENCE IN EKITI STATE, 2020.	47
3.5	DISTRIBUTION OF CONVICTED INMATES IN NIGERIA CORRECTIONAL SERVICE, IN EKITI STATE, 2020	48
3.6	NEW ARRIVAL INTO NIGERIA CORRECTIONAL SERVICE, BY SEX, MONTH AND NATURE OF CONVICTION IN EKITI STATE, 2020	49
3.7	DISTRIBUTION OF INMATES BY TYPE OF OFFENCE IN NIGERIA CORRECTIONAL SERVICE, IN EKITI STATE, 2020	50
3.8	CONVICTED INMATES LEAVING NIGERIA CORRECTIONAL SERVICES BY SEX AND LENGTH OF SENTENCE, IN EKITI STATE, 2020	51
3.9	MONTHLY RECORD OF CONVICTED INMATES LEAVING NIGERIA CORRECTIONAL SERVICE, BY SEX & AGE, 2020 IN EKITI STATE 2020.	52
3.10	AVAILABLE TRAINING OPPORTUNITY IN NIGERIA CORRECTIONAL SERVICE, EKITI STATE, 2020	53
	SECTION FOUR	54-55
4.1	DISTRIBUTION OF COURTS BY TYPE AND LOCAL GOVERNMENT IN EKITI STATE, 2020	56
4.2	NUMBER OF JUDGES, MAGISTRATES AND CUSTOMARY COURT PRESIDENTS BY SEX IN EKITI STATE, 2020	57
4.3	CLASSES OF SENIOR ADVOCATES OF NIGERIA (SAN) OF EKITI STATE ORIGIN BY SEX, 2020	58
4.4	REPORTED CASES BY TYPE OF OFFENCE AND SEX OF THE ACCUSED PERSONS IN EKITI STATE, 2020	59
4.5	TYPE OF OFFENCE AND DISPOSITION ORDER IN EKITI STATE, 2020	60

SECTION ONE

Table 1.1 contains information on the distribution of personnel in Nigeria Police Force into Senior, intermediate and junior level spread across the Local Government Areas (LGA) in Ekiti. Available information presents a total of 1055 personnel which comprises of 127(12%) in senior cadre, 381(36%) in Intermediate and 509 (48%) in the junior category. Statistical analysis shows that highest proportion of the staff are in junior category. Gender distribution shows that just 269(25.5%) of the workforce were women and rest men.

There were a total of 1,454 cases reported to Nigeria Police Force in Ekiti in 2020 as detailed in table 1.2, out of which 910 cases were settled and 544 transferred to court.

Cases handled by Nigeria Police Force ranges from house breaking, murder, rape, stealing and kidnapping to mention but a few. Prevalence of crime such theft and stealing stood at 48%, 6 men were arrested in connection with kidnapping, 5 (4.2%) of the cases were related to rape /defilement, 6 (0.3%) contradicts human trafficking law, 41(1.8%) people were alleged of attempt to commit murder and 29(1.3%) people had unlawful possessions.

Table 1.3 gives a comprehensive insight into various noticeable crimes in the state. The issue of insecurity has continued to raise concern both at national and sub-national levels. Prevalence of crime ranging from stealing, cheating, fraud, murder, robbery, rape/defilement gulps 48%, 15.6%, 4.9%, 24.2%, 1.7% and 2.5% respectively.

There were a total of 638 cases handled by Nigeria Police force which distributes the accused persons as 550(86.2%) male and 88(13.8%) female as presented in table 1.4.

Table 1.5 contains information on the 55 NSCDC stations that was available by Local Government in Ekiti State in 2020 which shows that Ikole and Ido/Osi Local Governments have 6 (9.2%) stations each followed by Oye and Irepodun/Ifelodun with 5 (9.2%) stations each.

The Senatorial distribution of NSCDC Stations reveals that there were 23 (41.8%) NSCDC stations in the Northern part of the state, central 18 (32.7%) and southern part with 14 (24.5%) . see table 1.6 for details.

Table 1.7 presents arrests made by NSCDC on various offences committed in the year. The record reveals the prevalence of criminal activities which consequently threatens the security/ peace of lives and properties in the state with a total of 1065 arrests made in the year out which breach of tenancy agreement, land matters, breach of contractual agreement, child abuse, stealing and child abandonment has 200 (18.8%), 110(10.3%), 108 (10.1%), 19 (1.8%), 58(5.4%) and 2(0.2%) respectively.

Information about the outcome of reported cases shows that 995 cases were settled and 74 transferred for further action which involves 743 male and 326 female as contain in table 1.8 .

Table 1.9 shows the distribution of staff of Federal Road Safety Corps into officers and marshals (senior, intermediate and junior level by gender and Cadre) for year 2020. There were a total of 317 personnel out of which 91 falls into officers group comprising of 77male (85%) and 14 female (15%) and the rest of 226 falls into marshal category that has 44(14%) female and the rest male.

Ekiti State has eighteen (18) FRSC bases in year 2020 with Ado and Ido/Osi having two (2) offices each while all other Local Governments has one office each. See table 1.10

The monthly record of traffic offenders arrested by FRSC in 2020 was given in table 1.11 that shows the distribution of arrested people by their offences ranging from route violation, use of phone while driving, driving with worn out spare tyre or without spare tyre, obstructing marshal on duty and failure to fix speed limiting, driving without seat belt, driver license violation among others. In the year a total of 1176 drivers were caught for driving without spare tyre, those that drove without seat belt recorded 1134 male and 407 female, drivers who were arrested for making calls while driving has 22male and 15 female. Offence relating to driver license violation has 62 people in all.

Information contained in table 1.12 focuses on the record of EKSTMA Stations in Ekiti for the year ended 2020 which shows that the agency has only one (1) office located in Ado-Ekiti.

Table 1.13 presents categorization of EKSTMA staff into junior 76(84.4%), intermediate 9(10%) and senior cadre 5(5.6%) .

The monthly record of traffic offenders arrested by EKSTMA in 2020 was contains in table 1.14. that shows that 86(18.76%) drivers violated the traffic light, 12(2.6%) drivers were arrested for making calls while driving and above 145(31.56%) drivers were caught for obstruction, 50(10.8%) illegal parking and 17(3.7%) for reckless driving. However, highest arrests of 83 was made in January, 13 the least in June and 28 in December.

TABLE 1.1

**NUMBER OF OFFICERS AND STAFF OF NIGERIA POLICE FORCE IN EKITI STATE
BY LOCAL GOVERNMENT IN 2020**

S/N	CADRE	SENIOR			INTERMEDIATE			JUNIOR			GRAND TOTAL			%
		M	F	T	M	F	T	M	F	T	M	F	T	
1.	ADO CENTRAL	12	2	13	26	19	45	13	13	26	50	34	84	8.0
2.	OKE –ILA	9	2	11	20	23	43	14	6	20	43	31	74	7.0
3.	NEW-IYIN	-	-	-	-	-	-	-	-	-	-	-	-	0.0
4.	OLOGEDE	8	4	12	18	18	36	20	13	33	46	35	81	7.7
5.	ODO-ADO	8	1	9	21	3	24	14	33	52	33	35	108	10.2
6.	AREA COMM.D.	8	2	10	16	10	26	9	6	15	33	16	49	4.6
7.	EMURE	4	1	5	14	1	15	16	2	13	34	4	38	3.6
8.	IYE	3	-	3	9	-	9	11	3	14	23	3	26	2.5
9.	OMUO	3	-	3	5	1	6	14	6	20	22	7	29	2.7
10.	ISE	5	-	5	17	10	27	14	3	17	29	13	42	4.0
11.	EFON	7	-	7	14	2	16	18	4	22	39	6	45	4.3
12.	OMUO-OKE	2	-	2	10	-	10	7	1	8	17	1	18	1.7
13.	ILAWE	4	-	4	11	3	14	36	8	44	62	11	73	6.9
14.	IJERO	2	-	2	12	5	17	24	6	30	38	11	49	4.6
15.	OYE	4	-	4	11	2	13	20	10	30	35	12	47	4.5
16.	IGEDE	7	-	7	14	1	15	5	5	20	36	6	42	4.0
17.	IDO	9	1	10	18	2	20	30	10	40	57	13	80	7.6
18.	ILUPEJU IKERE	7	-	7	7	5	12	22	7	29	36	12	48	4.5
19.	IKOLE	7	-	7	16	2	18	31	8	39	54	10	64	6.1
20.	ARAMOKO	5	1	6	15	-	15	29	8	37	49	9	58	5.5
	TOTAL	114	14	127	274	107	381	347	152	509	736	269	1055	100.0

TABLE 1.2

**NUMBER OF CASES REPORTED, SETTLED AND TRANSFERRED TO COURT BY
NIGERIA POLICE FORCE EKITI STATE IN 2020**

S/N	TYPES OF CASES			PERSONS INVOLVED			
	CASES REPORTED	CASES SETTLED	CASES TRANSFERRED TO COURT	MALE	FEMALE	TOTAL	%
1.	MURDER	-	31	48	2	50	7.5
2.	ATTEMPTED MURDER	6	10	20	1	21	3.2
3.	GRIEVIUS HARM	12	14	16	2	18	2.7
4.	ASSAULT	325	102	27	36	163	24.5
5.	RAPE & INDECENT ASSULT	2	59	65	2	67	10.1
6.	KIDNAPPING	-	5	9	1	10	1.5
7.	ARMED ROBBERY	-	25	36	-	36	5.4
8.	THEFT & STEALING	560	139	-	-	-	0.0
9.	BURGLARY	-	18	35	1	36	5.4
10.	HOUSE BREAKING	-	10	21	1	22	3.3
11.	STORE BREAKING	-	4	8	-	8	22.2
12.	FALSE PRETENCE CHEATING	-	102	140	26	166	25.0
13.	FORGERY	-	1	1	-	1	0.2
14.	RECEIVING STOLEN PROPERTY	-	4	10	-	10	1.5
15.	UNLAWFUL POSSESSION	-	4	10	1	11	1.7
16.	CULTISM	-	-	-	-	-	0.0
17.	O.B.T						0.0
18.	ARSON	5	4	8	2	10	1.5
19.	BREACH OF PUBLIC PEACE	-	12	36	-	36	5.4
	TOTAL	910	544	490	75	665	100.0

TABLE 1.3

TYPE OF OFFENCE AVAILABLE AND NUMBER OF PERSONS INVOLVED BY GENDER IN THE NIGERIA POLICE FORCE IN EKITI STATE, 2020

S/N	OFFENCE	MALE	FEMALE	TOTAL	%
1	MURDER	69	9	78	3.0
2	ATTEMPTED MURDER	37	4	41	1.6
3	GRIEVIOUS HARM	28	6	34	1.3
4	ASSAULT	427	113	540	20.8
5	RAPE & INDECENT ASSAULT	67	2	69	2.7
6	KIDNAPPING	17	2	19	0.7
7	ARMED ROBBERY	47	-	47	1.8
8	THEFT & STEALING	554	79	633	24.4
9	BURGLARY	73	12	85	3.3
10	HOUSE BREAKING	60	12	72	2.8
11	STORE BREAKING	29	-	29	1.1
12	FALSE PRETENCE CHEATING	199	43	242	9.3
13	FORGERY	1	-	1	0.0
14	RECEIVING STOLEN PROPERTY	11	-	11	0.4
15	UNLAWFUL POSSESSION	14	1	15	0.6
16	CULTISM	41	-	41	1.6
17	OTHER OFFENCES	453	105	558	21.5
18	ARSON	29	2	31	1.2
19	BREACH OF PUBLIC PEACE	41	4	45	1.7
	TOTAL	2197	394	2591	100.0

TABLE 1.4

REPORTED CASES BY TYPE OF OFFENCE AND SEX OF THE ACCUSED PERSONS HANDLED BY NIGERIA POLICE FORCE IN EKITI STATE 2020

S/N	TYPE OF OFFENCE	2020			%
		GENDER		TOTAL	
		MALE	FEMALE		
1	MURDER	48	2	50	7.9
2	ATTEMPTED MURDER	20	1	21	3.3
3	GRIEVIOUS HARM	16	2	16	2.5
4	ASSAULT	27	36	63	9.9
5	RAPE & INDECENT ASSAULT	65	2	67	10.5
6	KIDNAPPING	9	1	10	1.6
7	ARMED ROBBERY	36	-	36	5.7
8	THEFT & STEALING	-	-	-	0.0
9	BURGLARY	35	1	36	5.7
10	HOUSE BREAKING	21	1	22	3.5
11	STORE BREAKING	8	-	8	1.3
12	FALSE PRETENCE CHEATING	140	26	166	26.1
13	FORGERY	1	-	1	0.2
14	RECEIVING STOLEN PROPERTY	10	-	10	1.6
15	UNLAWFUL POSSESSION	10	11	21	3.3
16	CULTISM	-	-	-	0.0
17	LAND GRABING	60	3	63	9.9
18	ARSON	8	2	10	1.6
19	BREACH OF PUBLIC PEACE	36	-	36	5.7
	TOTAL	550	88	638	100.0

TABLE 1.5**NUMBER OF NIGERIA SECURITY AND CIVIL DEFENCE CORPS (NSCDC) STATIONS AVAILABLE IN EKITI STATE BY LOCAL GOVERNMENT, 2020**

S/N	LGA	NUMBER OF NSCDC STATION	%
1	ADO	04	7.3
2	EFON-ALAAYE	01	1.8
3	EKITI EAST	04	7.3
4	EKITI WEST	04	7.3
5	EKITI S/WEST	03	5.5
6	EMURE	01	1.8
7	GBONYIN	04	7.3
8	IDO/OSI	06	10.9
9	IJERO	04	7.3
10	IKERE	01	1.8
11	IKOLE	06	10.9
12	ILEJEMEJE	02	3.6
13	IREPODUN/IFELODUN	05	9.1
14	ISE/ORUN	01	1.8
15	MOBA	04	7.3
16	OYE	05	9.1
	TOTAL	55	100.0

TABLE 1.6

SENATORIAL DISTRIBUTION OF NSCDC STATIONS IN EKITI STATE, 2020

S/N	NAME OF SENATORIAL DISTRICT	NO OF STATIONS	%
1	EKITI SOUTH	14	25.5
2	EKITI NORTH	23	41.8
3	EKITI CENTRAL	18	32.7
	TOTAL	55	100

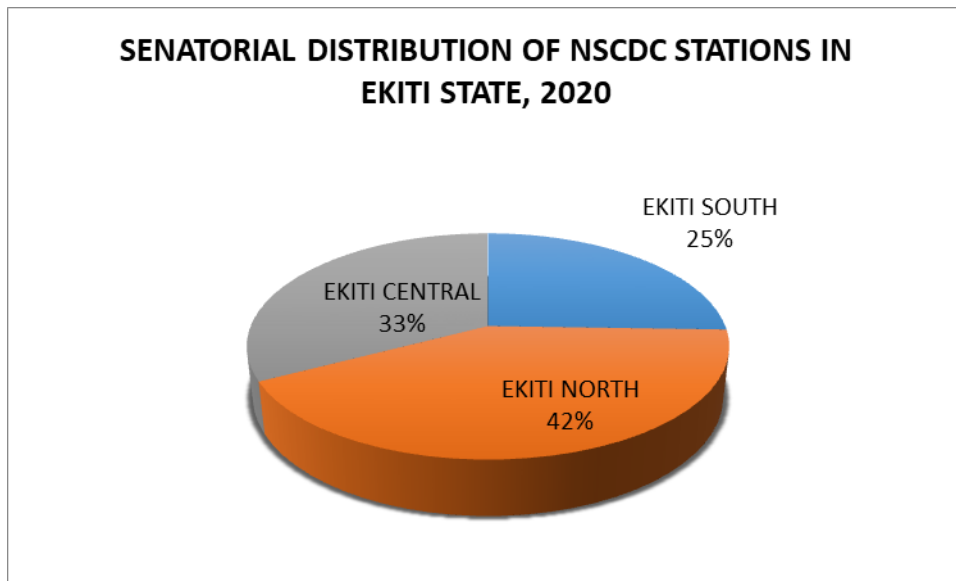


TABLE 1.7

**NUMBER OF CASES AND TYPE OF OFFENCES HANDLED BY NIGERIA SECURITY AND CIVIL DEFENCE
CORPS (NSCDC) EKITI STATE COMMAND, 2020**

S/N	TYPE OF OFFENCE	MALE	%	FEMALE	%	TOTAL	%
1	Breach of contract agreement	80	10.6	28	9.0	108	10.1
2	Breach of Tenancy agreement	155	20.6	45	14.4	200	18.8
3	Family Disputes	10	1.3	34	10.9	44	4.1
4	Land Matters	80	10.6	30	9.6	110	10.3
5	Alleged Case of Fraud	54	7.2	12	3.8	66	6.2
6	Breach of trust	67	8.9	23	7.4	90	8.5
7	Robbery	7	0.9	NIL	NIL	7	0.7
8	Theft	25	3.3	13	4.2	38	3.6
9	Stealing	48	6.4	17	5.4	58	5.4
10	Criminal Conversion	42	5.6	9	2.9	51	4.8
11	Burglary	17	2.3	6	1.9	23	2.2
12	Threat to Life	16	2.1	7	2.2	23	2.2
13	Malicious Damage	23	3.1	10	3.2	34	3.2
14	Violation of mineral act	1	0.1	1	0.3	2	0.2
15	Illegal excavation of minerals sand	1	0.1	NIL	NIL	1	0.1
16	Pregnancy Disputes	2	0.3	2	0.6	4	0.4
17	Rape	NIL		7	2.2	7	0.7
18	Child Abandonment	1	0.1	1	0.3	2	0.2
19	Paternity Disputes	NIL		2	0.6	2	0.2
20	Child Waywardness	NIL		2	0.6	2	0.2
21	Child Abuse	13	1.7	6	1.9	19	1.8
22	Financial Indebtedness	82	10.9	18	5.8	100	9.4
23	False Pretense	1	0.1	NIL	NIL	1	0.1
24	Illegal grazing of farmlands	12	1.6	NIL	NIL	12	1.1
25	Assault/Affray	23	3.1	39	12.5	62	5.8
	TOTAL	753	100	312	100.0	1065	100.0

NUMBER TABLE 1.8
NUMBER OF CASES REPORTED, CASES SETTLED AND CASES TRANSFERRED TO COURT BY NIGERIA
SECURITY AND CIVIL DEFENCE CORPS (NSCDC) EKITI STATE IN 2020

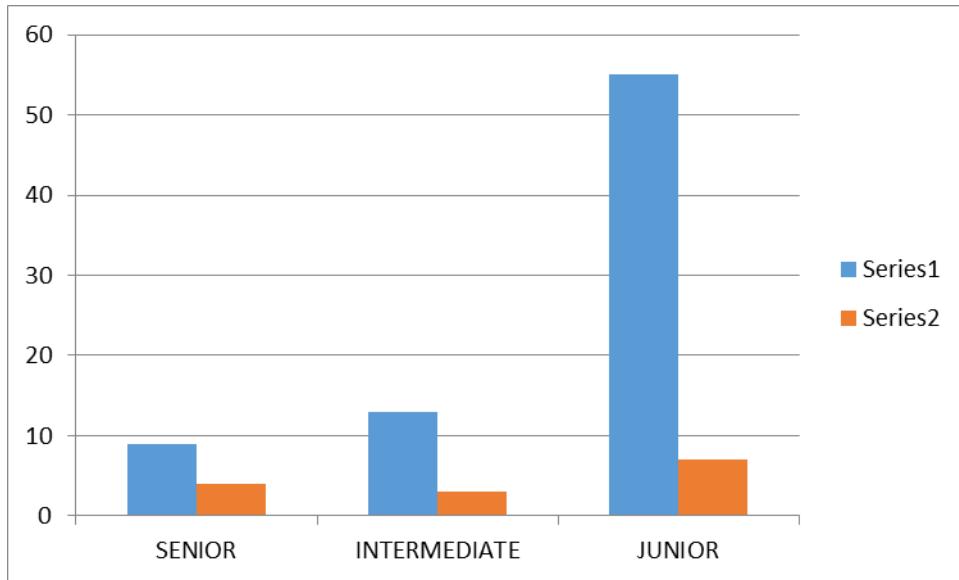
S/N	TYPE OF CASES			PERSONS INVOLVED		TOTAL	%
	CASES REPORTED	CASES SETTLED	CASES TRANSFERRED	MALE	FEMALE		
1	Breach of contract agreement	108	NIL	80	28	108	10.1
2	Breach of Tenancy agreement	200	NIL	155	45	200	18.7
3	Family Disputes	44	NIL	10	34	44	4.1
4	Land Matters	102	10	80	32	112	10.4
5	Alleged Case of Fraud	51	6	51	6	57	5.3
6	Breach of trust	83	7	67	23	90	8.4
7	Robbery	7	4	7	4	11	1.0
8	Theft	31	7	25	13	38	3.5
9	Stealing	56	7	41	22	63	5.8
10	Criminal Conversion	46	5	42	9	51	4.8
11	Burglary	20	3	17	6	23	2.2
12	Threat to Life	22	3	16	9	25	2.3
13	Malicious Damage	34	5	24	15	39	3.6
14	Violation of mineral act	2	NIL	1	1	2	0.2
15	Illegal excavation of minerals sand	1	NIL	1	NIL	1	0.1
16	Pregnancy disputes	4	NIL	2	2	4	0.4
17	Rape		7		7	7	0.7
18	Child abandonment	2	NIL	1	1	2	0.2
19	Paternity disputes	2	NIL	NIL	2	2	0.2
20	Child Waywardness	2	NIL	NIL	2	2	0.2
21	Child abuse	17	2	13	6	19	1.8
22	Financial indebtedness	100	NIL	82	18	100	9.4
23	False pretense	1	NIL	1	NIL	1	0.1
24	Illegal grazing of farmlands	5	1	4	2	6	0.6
25	Assault/affray	55	7	23	39	62	5.8
	TOTAL	995	74	743	326	1069	100

TABLE 1.9

NUMBER OF STAFF IN FRSC BY CADRE, 2020

CADRE	OFFICERS				MARSHALS				TOTAL	
	MALE	%	FEMALE	%	MALE	%	FEMALE	%		
SENIOR	9	11.7	4	28.6	2	1.1	1	2.3	16	5.0
INTERMEDIATE	13	16.9	3	21.4	55	30.2	16	36.4	87	27.4
JUNIOR	55	71.4	7	50.0	125	68.7	27	61.4	214	67.5
TOTAL	77	100.0	14	100.0	182	100.0	44	100.0	317	100.0

OFFICERS



MARSHALS

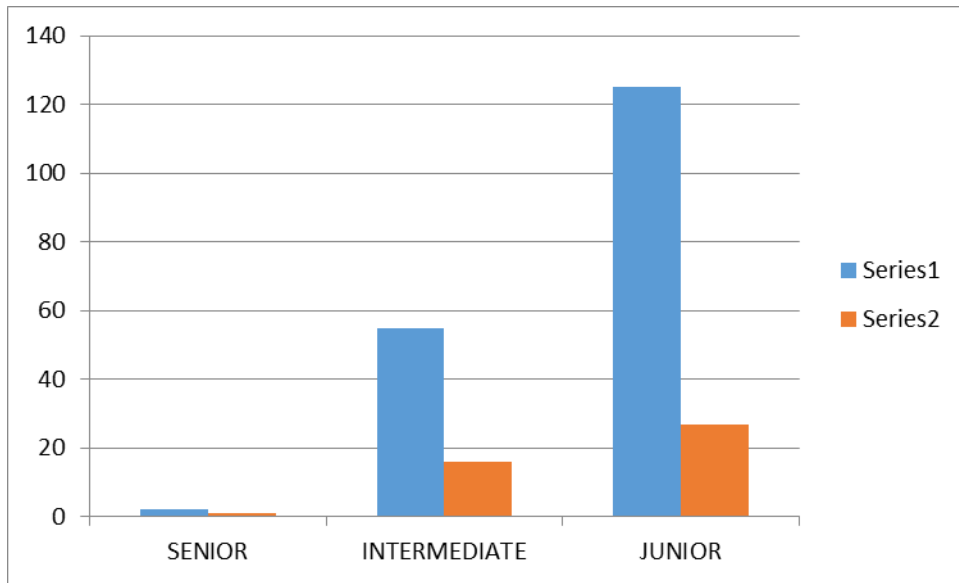


TABLE 1.10**NUMBER OF FRSC BASE AVAILABLE BY LGA IN EKITI STATE , 2020**

S/N	LGA	NO OF FRSC BASE	%
1	ADO	2	11.1
2	EFON ALAYE	1	5.6
3	EKITI EAST	1	5.6
4	EKITI S/WEST	1	5.6
5	EKITI WEST	1	5.6
6	EMURE	1	5.6
7	GBONYIN	1	5.6
8	IDO/OSI	2	11.1
9	IJERO	1	5.6
10	IKERE	1	5.6
11	IKOLE	1	5.6
12	ILEJEMEJE	1	5.6
13	IREPODUN/IFELODUN	1	5.6
14	ISE/ORUN	1	5.6
15	MOBA	1	5.6
16	OYE	1	5.6
	TOTAL	18	100.0

TABLE 1.11

MONTHLY RECORDS OF TRAFFIC OFFENDER ARRESTED BY FRSC, 2020

S/N	TYPE OF OFFENCES	JAN		FEB		MAR		APR		MAY		JUNE		JUL		AUG		SEPT		OCT		NOV		DEC		TOTAL	
		M	F	M	F	M	F	M	F	M	F	M	F	M	F	M	F	M	F	M	F	M	F	M	F	M	F
1	Caution Sign Violation	1		4		3	1					2	2	2	3	9	9	4	3	5					1	32	18
2	Driver`s License Violation	7		13		7	1			3		4	2	11	1	5	1	6						1	56	6	
3	Do Not Move Violation									1				2		3										6	
4	Driving with Worn-out Tyre or without Spare Tyre	139	17	124	37	86	28		1	4	2	96	15	168	37	134	45	119	44	59	10	1		7	3	937	239
5	Driving with Expired/Worn out Spare Tyre									19	9			29	8	7	3	22	22	5	5			2	2	84	48
6	Failure to Cover Unstable Materials											1														1	
7	Failure to Fix Red Flag on Projected Load	5		5		3	1			3				8		4		6	1	2						36	2
8	Failure to more Over	18		14		31				1	7	7	2	19	1	13	1	11	1	7				2		123	6
9	Light or Sign Violation	2		7	1	6				1		2		10	2	30		9	2	8	1	3		3		81	6
10	Overloading	5		4		8		3		2		7		12		6		5	1	4				2		58	1
11	Riding Motorcycle Without Crash Helmet	141		139		164				37		192		356		254		370		258				24		1935	
12	Route Violation	3	1	4	2	5	1	1	1	2	1	2		2	1	3		3		1						26	7
13	Driving Without Seat Belt	88	8	145	49	160	44	1		41	13	139	44	133	63	151	66	162	71	80	43	3		31	6	1134	407
14	Use of Phone while Driving	1	1	1	2	3	1		1	2	2	2	3	3	1	3	1	4	1	2	1			1	1	22	15
15	Vehicle License Violation	53	15	90	27	36	23	1	1	11	3	43	25	81	24	64	11	56	18	42	12	1		1	1	479	160

16	Vehicle Number Plate Violation	86	7	140		105		3		38	8	99		161	8	122	18	151	5	71	11			10	2	986	59
17	Driving without or with Shattered Windscreen	12	8	17	6	25	1					37		17	4	14	2	17	4	12	4			3		154	29
18	Wrongful Overtaking	1				1								1				2			1					5	1
19	Vehicle Mirror Violation																										
20	Learner`s Drivers Violation																										
21	Child Restraint Violence																										
22	Other Offences Violence	4					2									1	2		2							5	6
23	Dangerous Driving	1		2										1				1								5	
24	Driving a Vehicle while Under 18																										
25	Child Sitting Position Violent																										
26	Assaulting Marshal on Duty																		1								1
27	Road Obstruction	1	1	3		2	1					2		1		2		1		1		2				15	2
28	Driving Right- Hand Wheeling Vehicle																										
29	Obstructing Marshal on Duty	2		5						1		3		2		2	1	1	1	4						20	2
30	Attempting to Corrupt Marshal	1					1			1		3		3		2		3		4		1	1			18	2
31	Mechanically Deficient Vehicle			1						1		1														3	
32	Road Marking Violation																										
33	Operating a Vehicle with Forged Documents																										

34	Passenger Manifest Violation																									
35	Projected Load in Excess of Prescribed																		1						1	
36	Excessive Smoke Emission			1										1										2		
37	Speed Limit Violation	55		68	27	77		1	13	23	22	28	19		64	12	50		2				13	1	384	91
38	Attempting to Corrupt Marshal																									
39	Driving a Vehicle While Under 18 Year																									
40	Failure to fix speed limiting device																									
	TOTAL																									

TABLE 1.12**NUMBER OF EKSTMA STATIONS BY LOCAL GOVERNMENT AREA IN EKITI STATE 2020**

S/N	LOCAL GOVERNMENT AREA	NUMBER OF EKSTMA BIT	NUMBER OF EKSTMA STATION
1	ADO	23	1
2	EFON ALAYE	NIL	NIL
3	EKITI EAST	NIL	NIL
4	EKITI S/WEST	NIL	NIL
5	EKITI WEST	NIL	NIL
6	EMURE	NIL	NIL
7	GBONYIN	NIL	NIL
8	IDO/OSI	NIL	NIL
9	IJERO	NIL	NIL
10	IKERE	NIL	NIL
11	IKOLE	NIL	NIL
12	ILEJEMEJE	NIL	NIL
13	IREPODUN/IFELODUN	NIL	NIL
14	ISE/ORUN	NIL	NIL
15	MOBA	NIL	NIL
16	OYE	NIL	NIL
	TOTAL	23	1

TABLE 1.13

**PERCENTAGE DISTRIBUTION OF OFFICERS AND STAFF OF EKITI STATE TRAFFIC
MANAGEMENT AGENCY (EKSTMA) 2020**

S/N	CADRE	M	%	F	%	TOTAL	%
1	SENIOR	2	3.08	3	11.54	5	5.56
2	INTERMEDIATE	8	12.31	1	3.85	9	10.00
3	JUNIOR	55	84.62	22	84.62	76	84.44
	TOTAL	65		26		90	100.00

TABLE 1.14

MONTHLY DISTRIBUTION OF TRAFFIC OFFENDERS RECORDED BY EKITI STATE TRAFFIC MANAGEMENT AGENCY, 2020

S/N	TYPES OF OFFENCES	JAN	FEB	MAR	APR	MAY	JUN	JUL	AUG	SEP	OCT	NOV	DEC	TOTAL	%
1	Violation of traffic light	14	8	10	5	3	4	7	8	10	7	5	5	86	18.7
2	Obstruction	36	20	5	7	9	3	4	15	15	16	7	8	145	31.5
3	One way	10	11	7	8	3	2	4	5	1	2	4	3	49	10.6
4	Overloading	2	-	-	-	-	-	-	1	2	3	5	1	14	2.3
5	Restriction of movement	-	-	-	-	-	-	-	-	-	-	-	-		
6	Double parking	4	1	2	4	1	1	2	3	4	1	2	1	26	5.6
7	Illegal parking	7	4	8	9	-	1	-	5	7	8	-	1	50	10.8
8	Illegal U-Turn	4	2	1	-	-	-	-	4	1	2	5	1	19	4.1
9	Parking at T-Junction	2	4	1	-	-	-	-	2	1	1	1	2	12	2.6
10	Making calls while driving	1	2	1	1	-	-	-	1	2	1	2	1	12	2.6
11	Drinking alcohol while driving	-	-	-	-	-	-	-	-	-	-	-	-		
12	Trading on the road	-	-	-	-	-	-	-	-	-	-	-	-		
13	No number	-	-	-	-	-	-	-	-	-	-	-	-		
14	Assault	2	1	1	-	-	1	1	-	2	1	4	3	16	3.5
15	Non-use of seat belt	-	-	-	-	-	-	-	-	-	-	-	-		
16	Picking passengers on highways	-	-	-	-	-	-	-	-	-	-	-	-		
17	Non-use of helmet	-	-	-	-	-	-	-	-	-	-	-	-		
18	Reckless driving	1	2	1	2	1	1	1	2	2	1	2	2	17	3.7
	TOTAL	83	55	37	36	17	13	19	46	47	43	37	28	461	100.0

SECTION TWO

The section analyses various activities of social welfare department under Ministry of Women Affairs and Gender Empowerment of Ekiti State. The department was saddle with responsibilities to monitor and evaluates family cases reported to the five (5) Zonal offices.

Table 2.1 shows that 60 family cases were entertained in 2020 out of which 44 (73%) were reconciled and 16(27%) pending.

Beneficiaries of reformed programs like giving allowances to some children on rehabilitation, provisions for orphanage home and adopted children being coordinated by ministry of women affairs, social welfare and gender empowerment was contains in table 2.2. It was observed that 22 (12.87%) were in orphanage home, 20(11.7%) were adopted and 129 persons comprising of 73 (57%) female and 56(43.3%)male have their cases entertained by the ministry. See table 2.2 for details

Information in table 2.3 shows that 6 young ones were reported to be out of parental control.

Table 2.4 reveals the number of 12 young ones which were alleged of stealing and indecent assault each.

TABLE 2.1**DISTRIBUTION OF FAMILY CASES BY STATUS AND ZONE IN EKITI STATE, 2020**

S/N	ZONE	LGA covered	No of Family Cases Entertained	%	No of family cases reconciled	%	No of Family Cases pending	%	Total	%
1	Ado	Ado	37	61.67	30	68.18	7	43.75	74	61.67
2	Ijero	Ijero	-	0.00	-	0.00	-	0.00	0	0.00
3	Ikole	Ikole	17	28.33	10	22.73	7	43.75	34	28.33
4	Ido	Ido	2	3.33	2	4.55	-		4	3.33
5	Ikere	Ikere	4	6.67	2	4.55	2	12.50	8	6.67
Total			60	100	44	100	16	100	120	100

TABLE 2.2

BENEFICIARIES OF REFORMED PROGRAMMES BEING CO-ORDINATED BY MIN. OF WOMEN AFFAIR, SOCIAL WELFARE AND GENDER EMPOWERMENT IN EKITI STATE, 2020

S/N	SERVICES/PROGRAMMES	M	%	F	%	TOTAL	%
1	Children in the children home (Motherless Home)	6	6.06	16	22.22	22	12.87
2	Inmates on rehabilitation	-	-	-	-	-	-
3	Beneficiaries of family cases entertained	73	73.74	56	77.78	129	75.44
4	Beneficiaries of family disputes reconciled	-	-	-	-	-	-
5	Adopted children	20	20.20	-		20	11.70
6	Juvenile cases entertained	-	-	-	-	-	-
7	No. of children on maintenance allowance	-	-	-	-	-	-
	TOTAL	99		72		171	100

TABLE 2.3

**JUVENILE CASES AGAINST REGULATIONS ENTERTAINED BY NATURE OF OFFENCE HANDLED BY SOCIAL WELFARE DEPT
IN EKITI STATE, 2020**

S/N	OFFENCE AGAINST REGULATIONS	NEW							BROUGHT OVER							TOTAL		
		BOY			GIRL				BOY			GIRL						
		CH	Y	TOTAL	CH	Y	Total	B + G	CH	Y	TOTAL	CH	Y	TOTAL	B+G	M	F	M&F
1	Street trading	-			-	-			-	-		-	-					
2	Driving without license																	
3	Riding unlicensed bicycle	-																
4	Beyond parental control	-	2	2	1		1	3	2			1	3	6				
5	Traffic Obstruction																	
6	Others																	
	TOTAL																	

KEY
CH- CHILDREN
Y- YOUTH

TABLE 2.4
NUMBER OF JUVENILE CASES ENTERTAINED BY THE SOCIAL WELFARE DEPARTMENT BY NATURE OF OFFENCE IN EKTITI STATE, 2020

S/N	OFFENCE AGAINST REGULATIONS	NEW						BROUGHT OVER						TOTAL				
		BOY			GIRL			BOY			GIRL			BOY		GIRL		TOTAL
		CH	Y	TOTAL	CH	Y	TOTAL	CH	Y	TOTAL	CH	Y	TOTAL	CH	Y			
1	Idleness And Disorderliness	-	-	-	-	-	-	-	-	-	-	-	-	-	-	-	-	-
2	Assault	-	-	-	-	-	-	-	-	-	-	-	-	-	-	-	-	-
3	Assault	-	-	-	-	-	-	-	-	-	-	-	-	-	-	-	-	-
4	Assault Occasioning Ham	-	-	-	-	-	-	-	-	-	-	-	-	-	-	-	-	-
5	Indecent Assault	-	-	-	-	-	-	-	-	-	-	-	-	2	10	-	-	12
6	Stealing	2	10	12	-	-	-	-	-	-	-	-	-	-	-	-	-	12
7	Unlawful Possession	-	-	-	-	-	-	-	-	-	-	-	-	-	-	-	-	-
8	Receiving Stolen Property	-	-	-	-	-	-	-	-	-	-	-	-	-	-	-	-	-
9	Forgery/stolen property	-	-	-	-	-	-	-	1-	-	-	-	-	-	-	-	-	-
10	Offence Relating To Currency	-	-	-	-	-	-	-	-	-	-	-	-	-	-	-	-	-
11	Breach Of Recognizance Order	-	-	-	-	-	-	-	-	-	-	-	-	-	-	-	-	-
12	Robbery	-	1	1	-	-	-	-	-	-	-	-	-	-	1	-	-	1
13	Street trading	-	-	-	-	-	-	-	-	-	-	-	-	-	-	-	-	-
14	Driving without license	-	-	-	-	-	-	-	-	-	-	-	-	-	-	-	-	-
15	Beyond parental control	-	2	2	1	-	1	-	-	-	-	-	-	-	2	1	-	6
	TOTAL	2	13	15	1	0	1	0	0	0	0	0	0	0	13	1	0	16

SECTION THREE

Table 3.1 presents information on the capacity and actual number of inmates accommodated in Nigeria Correctional Service center in Ado-Ekiti as at 2020. The facility meant to accommodate 324 inmates was overloaded with 161 inmates with congestion rate of 50%. Further pictorial information was presented in fig 12.

The distribution of 152 staff of Nigeria Correctional Service located in Ado-Ekiti into different cadre of professional and administrative was contained in table 3.2 which shows that there were just 6(4%) staff in professional category and 149 (98%) in Administrative. It was further observed that only 30 (19.7%) were female and as much as 122(80.3%) were male. See fig 1.3 for details.

The record of available facilities in Nigeria Correctional Service in Ado-Ekiti which falls into recreational, religion and health facility were contained in table 3.3. There were 73 facilities which includes drum, megaphone, well, volleyball, water system, consulting room and beds.

The number of persons remanded who were awaiting trial from Nigeria Correctional Service Ado-Ekiti was 109 as given by table 3.4 The record compiled on monthly basis shows that 38(34.86%)male and 71(65.14%) were female. There was no person remanded in October, only one person in January and highest of 9 was recorded in March. A total of 5824 inmate was remanded out which 1224(96.9%)male and 39(3.1%) female were convicted and 4534(99.1%) male and their female counterpart of 40(0.9%) were unconvicted. The monthly record of arrival into the Nigeria Correctional Service, those having one, two and even three convictions disaggregated by sex was given in table 3.6. It was noted that new arrival was as much as 436(90.3%)male and

16(3.3%) female, while highest arrival of 63 was recorded in August, least of 25 in November, there was no arrival in the months of April & May. Further observations shows that inmates with one, two and three convictions were 14(2.9%), 13(2.7%) and 4(0.8%) respectively, no female had previous convictions.

Table 3.7 gives the distribution of inmates in Nigeria Correctional Service , Ado-Ekiti by the type of offence among which are: armed robbery, robbery, murder, sex offence/ rape and stealing among others. Further analysis shows that armed robbery, robbery, murder, sex offence/rape and stealing has, 111(22.9%) 78(16.1%) 103(21.4%)21(4.3%) and 67(13.8%) respectively.

The statistics of convicts leaving Nigeria Correctional Service by sex and length of sentence in Ekiti State for 2020 was given in table 3.8 with a total of 114 out of which just 2 were female. A total of 51 inmates served for 2 years but less than 10 years. 10 male inmates had natural life and no one was sentenced to death.

TABLE 3.1

CAPACITY AND ACTUAL NUMBER OF INMATES IN ADO EKITI FEDERAL CORRECTIONAL SERVICES, 2020

YEAR	2020	
PRISON CAPACITY	324	
TOTAL INMATES	485	

TABLE 3.2

NUMBER OF STAFF IN FEDERAL CORRECTIONAL SERVICES, ADO EKITI BY SEX AND PROFESSION, 2020

CADRE	M	F	TOTAL	%
Professional	3	3	6	3.9
Administrative	119	27	146	96.1
Other	-	-	-	
TOTAL	122	30	152	100

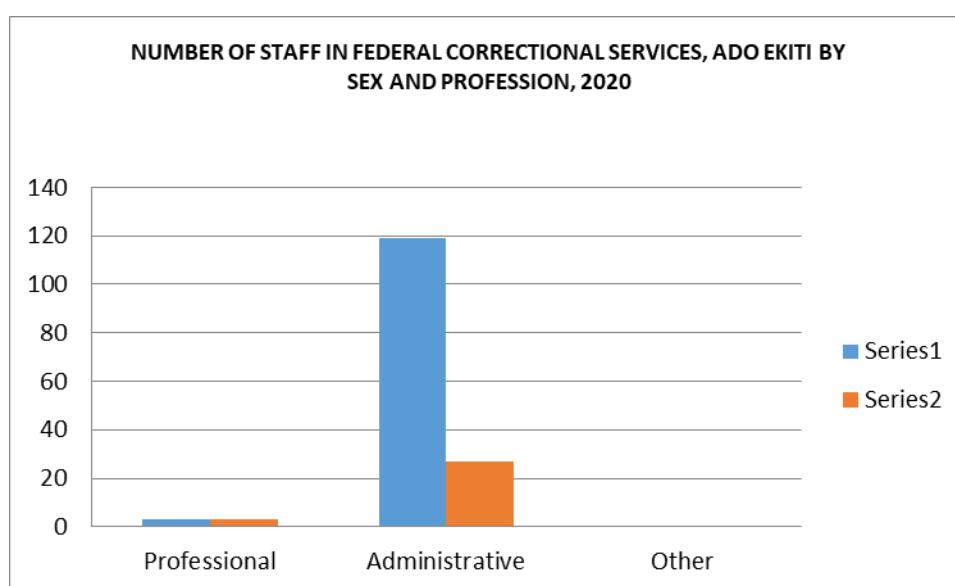


TABLE 3.3

AVAILABLE FACILITIES IN FEDERAL CORRECTIONAL SERVICES, ADO EKITI, 2020

S/N	FACILITY	TYPE	NUMBER AVAILABLE	%
1	Recreational Facilities	1. Table Tennis	1 PITCH	
		2. Football	1 COURT	
		3. Volley Ball		
2	Religious Facilities	1. Drum	1 SET	
		2. Microphone	1	
		3. Keyboard	3	
		4. Guitar		
3	Water	1. Borehole	1	
		2. Well	2	
4	Toilet Facilities	1. Water System	55	
5	Health Facilities	1. Consulting room	1	
		2. Admission Room	1	
		3. With4 beds 4		
6	Others	Bed Side Locker	4	
		Pharmacy store	1	
		Table	4	
		Chair	4	
	TOTAL			

**TABL
E 3.4
NUM
BER
OF
PERS
ONS
REMA
NDED
IN
FEDE
RAL
CORR
ECTIO
NAL
SERVI
CES,
BY
SEX,
MON
TH
AND
NATU**

--	--	--	--	--	--	--	--

RE OF OFFENCE IN EKITI, 2020

MONTH	NO OF PERSONS REMANDED AWAITING TRIAL			CIVIL LUNATIC		CRIMINAL			DETAINED FOR DEBT		DETAINED FOR WANT OF SECURITY		DETAINED UNDER GOVT, SECURITY		TOTAL		
	M	F	M+F	M	F	M	F	M+F	M	F	M	F	M	F	M	F	M+F
JAN	4	1	5	-	-	3	7	10							7	8	15
FEB	3	8	11	-	-	3	7	10							7	5	12
MAR	3	9	12	-	-	4	5	9							8	5	13
APR	3	7	10	-	-	4	2	6							7	9	16
MAY	3	6	9	-	-	4	0	4							7	6	13
JUN	3	4	7	-	-	3	9	12							7	4	11
JUL	3	5	8	-	-	4	1	5							7	7	14
AUG	3	8	11	-	-	4	0	4							7	9	16
SEPT	3	8	11	-	-	3	9	12							7	7	14
OCT	4	0	4	-	-	3	2	5							7	2	9
NOV	3	8	11	-	-	3	8	11							7	7	14
DEC	3	7	10	-	-	4	0	4							7	7	14
TOTAL	38	71	109			52	50	102							85	77	175

TABLE 3.5

MONTHLY DISTRIBUTION OF CONVICTED AND UNCONVICTED INMATES IN FEDERAL CORRECTIONAL SERVICES BY SEX, IN EKITI 2020

MONTH	NUMBER CONVICTED		NUMBER UNCONVICTED		TOTAL			
	MALE	FEMALE	MALE	FEMALE	TOTAL MALE	TOTAL FEMALE	GRAND TOTAL	%
JANUARY	121	03	408	09	529	12	541	9.3
FEBRUARY	119	03	377	06	496	09	505	8.7
MARCH	121	03	394	05	515	08	523	8.9
APRIL	96	03	369	03	465	06	471	8.1
MAY	95	03	361	03	456	06	462	7.9
JUNE	90	04	344	04	434	08	442	7.6
JULY	84	04	358	01	442	05	447	7.7
AUGUST	93	04	388	01	481	05	486	8.3
SEPTEMBER	93	04	379	01	472	05	477	8.2
OCTOBER	97	04	400	02	497	06	503	8.6
NOVEMBER	103	02	389	02	479	04	483	8.3
DECEMBER	112	02	367	03	479	05	484	8.3
TOTAL	1224	39	4534	40	5745	79	5824	100

TABLE 3.6

NEW ARRIVAL, BY SEX, MONTH AND NATURE OF CONVICTION IN NIGERIA CORRECTIONAL SERVICE, EKITI STATE 2020

MONTH	FIRST OFFENCE		HAVING ONE PREVIOUS CONVICTION		HAVING TWO PREVIOUS CONVICTIONS		HAVING THREE OR MORE PREVIOUS CONVICTIONS		TOTAL		GRAND TOTAL	%
	M	F	M	F	M	F	M	F	M	F		
JAN	28	1	-	-	-	-	-	-	28	1	29	6.0
FEB	52	1	3	-	3	-	-	-	58	1	59	12.2
MAR	43	-	1	-	1	-	-	--	45	-	45	9.3
APR	-	-	-	-	-	-	-	-	-	-	-	0.0
MAY	-	-	-	-	-	-	-	-	-	-	-	0.0
JUN	29	2	-	-	1	-	1	-	31	2	33	6.8
JUL	44	1	-	-	4	-	-	-	48	1	49	10.1
AUG	63	1	2	-	1	-	1	-	67	1	68	14.1
SEPT	43	1	-	-	-	-	1	-	44	1	45	9.3
OCT	52	2	4	-	1	-	-	-	57	2	59	12.2
NOV	25	2	3	-	2	-	1	-	31	2	33	6.8
DEC	57	5	1	-	-	-	-	-	58	5	63	13.0
TOTAL	436	16	14		13		4		467	16	483	100.0

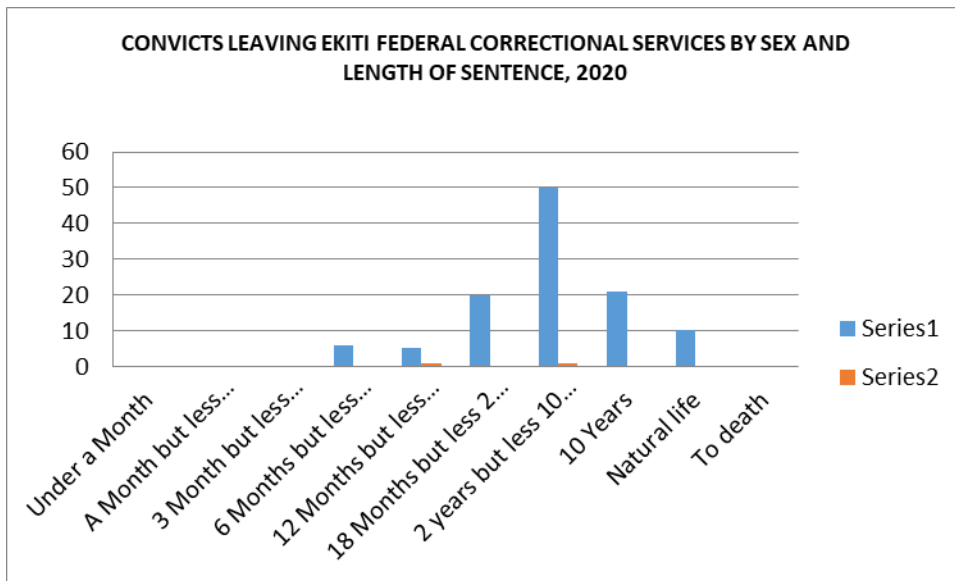
TABLE 3.7
NUMBER OF INMATES IN NIGERIA CORRECTIONAL SERVICE BY TYPE OF OFFENCE, IN EKITI STATE, 2020

S/N	OFFENCE	M	F	TOTAL	%
1	Debt	-	-	-	0
2	Terrorism	02	-	02	0.413223
3	Affray	-	-	-	0
4	Assault	16	01	17	3.512397
5	Murder	103	-	103	21.28099
6	Treason	-	-	-	0
7	Section	-	-	-	0
8	Abduction	02	-	02	0.413223
9	Smuggling	-	-	-	0
10	Kidnapping	-	-	-	0
11	Stealing	65	02	67	13.84298
12	Robbery	78	-	78	16.1157
13	Armed Robbery	111	-	111	22.93388
14	Sex Offence or Rape	21	-	21	4.338843
15	Traffic	01	--	01	0.206612
16	Currency	36	-	36	7.438017
17	Indian Hemp	21	-	21	4.338843
18	Contempt of Court	02	-	02	0.413223
19	Unlawful possession	06	-	06	1.239669
20	Forgery and Altering	05	01	06	1.239669
21	Escaping from Lawful Custody	02	-	02	0.413223
22	Native Law Custody	-	-	-	0
23	Obtain Under Presence	08	01	09	1.859504
	TOTAL	480	05	485	100

TABLE 3.8

CONVICTS LEAVING NIGERIA CORRECTIONAL SERVICE BY SEX AND LENGTH OF SENTENCE, IN EKITI ,2020

LENGTH OF SENTENCE	GENDER		TOTAL	%
	M	F		
Under a Month	-	-	-	0.0
A Month but less than 6 Months	-	-	-	0.0
3 Month but less than 6 Months	-	-	-	0.0
6 Months but less than 12 Months	06	-	06	5.3
12 Months but less 18 Month	05	01	06	5.3
18 Months but less 2 Years	20	-	20	17.5
2 years but less 10 Years	50	01	51	44.7
10 Years	21	-	21	18.4
Natural life	10	-	10	8.8
To death	-	-	-	0.0
TOTAL	112	02	114	100.0



SECTION FOUR

There were a total of 92 courts spread across the LGAs of Ekiti State in 2020. Available statistics shows that there was no Local Government in Ekiti without at least two (2) type of courts. Specifically, the type of courts in Ekiti State adequately represents the 3 level of powers while there were 3 Federal High Courts in the State located only in Ado Local Government, other Local Government Areas excluding Ekiti West, Gbonyin, Ilejemeje, Irepodun/Ifelodun Moba, and Oye did not have State high courts in their domains. As regards customary courts, Local Government Areas like Ekiti East, Ekiti West, Ekiti S/W, Gbonyin, Ilejemeje and Oye has 3 each while Emure, Efon, Ikere, Ise/Orun has one each.

Out of the 32 magistrate courts spread across the 16 LGAs of Ekiti State, Ado has the highest of 6 followed by Ekiti South-West, Ekiti West, Ijero, Ido/Osi and Irepodun/ Ifelodun has 3 each. The distribution of high court also reveals that aside Ado-Ekiti which is the State capital with the highest of 8 of courts other local government like Efon, Ekiti East, Ekiti S/W, Emure, Ikere, Ikole and Ise/Orun has one each while Moba, Oye, Irepodun/Ifelodun, Gbonyin and Ekiti West did not have access to State high court.

The record of rank of 69 judges by their sex in Ekiti State was detailed in table 4.2 which shows that there were 11 judges, 40 magistrates and 18 customary court presidents in 2020. Further information reveals that there was only 1 female judge and 13 female

customary court presidents. In all there were 35(50.7%) male Judges and 34(49.3%) female judges.

Table 4.3 focuses on the number of Ekiti Indigenes who were Senior Advocates of Nigeria (SAN) by sex in 2020 which shows that the 11 SANs out of which 10 were male and only one female were found in private practice.

Reported cases by type of offence and the sex of the accused persons transferred to court in Ekiti State in year 2020 shows that there were 345 divorce cases which involves 176 male and 169 female while case relating to recovery of debts has 2 female and 37 male. 13 men sought for separation as well as 11 women again, 2male and 18 female accused persons were being tried for stealing.

Record of disposition order of several court cases handled in Ekiti State reported that 778 cases were tried, 139 withdrawn, 41 accused were discharged 40 discharged / acquitted and high as 589 cases were pending. See details in table 4.5.

TABLE 4.1**TYPE OF COURTS BY LOCAL GOVERNMENT IN EKITI STATE, 2020**

LOCAL GOVERNMENT	TYPE OF COURT				TOTAL	%
	CUSTOMAR Y	MAGISTRATE	STATE HIGH COURT	FEDERAL HIGH COURT		
ADO EKITI	2	6	8	3	19	20.6
EFON ALAYE	1	1	1	-	3	3.3
EKITI EAST	3	1	1	-	5	5.4
EKITI S/WEST	3	3	1	-	7	7.6
EKITI WEST	3	3	-	-	6	6.5
EMURE	1	1	1	-	3	3.3
GBONYIN	3	1	-	-	4	4.3
IDO/OSI	4	3	1		8	8.7
IJERO	4	3	1	--	8	8.7
IKERE	1	1	1	-	3	3.3
IKOLE	2	1	1	-	4	4.3
ILEJEMEJE	3	1	-	-	4	4.3
IRE/IFELODUN	4	3	-	-	7	7.6
ISE/ORUN	1	1	1	-	3	3.3
MOBA	2	1	-	-	3	3.3
OYE	3	2	-	--	5	5.4
TOTAL	40	32	17	3	92	100.0

TABLE 4.2
NUMBER OF JUDGES, MAGISTRATES AND CUSTOMARY COURT PRESIDENTS
BY SEX IN EKITI STATE, 2020

S/N	RANK OF JUDGES	2020			
		MALE	FEMALE	TOTAL	%
1	JUDGES	10	1	11	15.9
2	MAGISTRATES	20	20	40	58.0
3	CUSTOMARY	5	13	18	26.1
	TOTAL	35	34	69	100.0

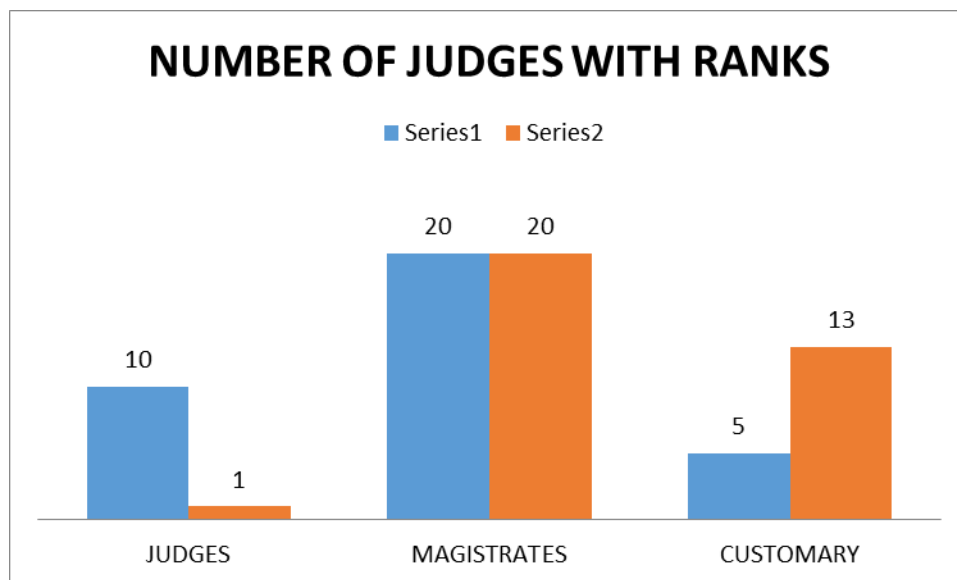


TABLE 4.3

NUMBER OF SENIOR ADVOCATES OF NIGERIA (SAN) OF EKITI STATE ORIGIN BY SEX, 2020

		MALE	FEMALE	TOTAL	%
1	GOVERNMENT SERVICES				
2	PRIVATE PRACTICE	10	1	11	11
3	NOT IN PRACTICE				
	TOTAL	10	1	11	11

TABLE 4.4
REPORTED CASES BY TYPE OF OFFENCES AND GENDER OF THE ACCUSED
PERSONS IN EKITI STATE, 2020

S/N	TYPE OF SUIT	MALE	FEMALE	TOTAL	%
1	BREACH OF CONTRACT	29	8	37	4.3
2	BREACH OF PROMISE	11	1	12	1.4
3	TRESPASS/ASSAULT	20	5	25	2.9
4	CONVERSION	7	1	8	0.9
5	DETENUE	4	-	4	0.5
6	FALSE IMPRISONMENT	1	-	1	0.1
7	MALICIOUS PROSECUTION	5	1	6	0.7
8	NUISANCE	3	-	3	0.4
9	LIBEL	1	-	1	0.1
10	SLANDER	1	2	3	0.4
11	DECLARATION OF TITLE TO LAND	142	17	159	18.7
12	RECOVERY OF PREMISES	23	2	25	2.9
13	DIVORCE	176	169	345	40.5
14	RENT	45	24	69	8.1
15	STEALING	18	2	20	2.3
16	SEPERATION	13	11	24	2.8
17	CHIEFTANCY MATTER	24	-	24	2.8
18	MAINTAINANCE	1	-	1	0.1
19	PATERNITY	2	-	2	0.2
20	CUSTODY	9	6	15	1.8
21	DEFERMATION	5	-	5	0.6
22	KIDNAPPING	1	-	1	0.1
23	ARMED ROBBERY	4	1	5	0.6
24	RECOVERY OF DEBTS	37	2	39	4.6
25	FRAUD	3	2	5	0.6
26	ADOPTION	3	5	8	0.9
27	CHILD/PREGNANCY	5	-	5	0.6
TOTAL		593	259	852	100.0

TABLE 4.5
TYPE OF OFFENCES AND DISPOSITION ORDER IN EKITI STATE, 2020

S/N	TYPE OF OFFENCE	NUMBER OF CASES						MALE	FEMALE	TOTAL
		TRIED	WITHDRAWN	DISCHARGED	DISCHARGED AND ACQUITTED	FOUND GUILTY	PENDING			
1	Murder	42	5	-	-	-	37	46	2	48
2	Manslaughter	4	-	-	-	-	4	4	-	4
3	Suicide	-	-	-	-	-	-	-	-	-
4	Assaults	102	24	11	4	2	61	73	26	99
5	Child Stealing	88	43	3	1	5	36	112	7	119
6	Slave Dealing	-	-	-	-	-	-	-	-	-
7	Rape and Assaults	46	1	1	-	-	44	46	-	46
8	Kidnapping	11	1	-	-	-	10	11	-	11
9	Armed Robbery	119	20	8	-	-	91	118	1	119
10	Theft and Stealing	115	13	13	9	5	75	111	12	123
11	Burglary	60	1	1	-	3	55	59	2	61
12	House Breaking	24	-	-	2	2	20	29	-	29
13	Bribery and Corruption	2	-	-	2	2	20	29	-	29
14	Forgery	2	-	-	-	-	2	3	-	3
15	Unlawful Possession	30	13	-	-	1	16	21	9	30
16	Arson	7	-	-	-	-	7	6	5	11
17	Narcotics	1	-	1	-	-	-	4	-	4
18	Bigamy	-	-	-	-	-	-	-	-	-
19	Fraud	98	18	2	2	1	75	84	15	99
20	Cultism	7	-	-	-	-	7	14	1	15
21	Sexual abuse	7	-	1	-	-	6	7	-	7
22	Attempted murder	3	-	-	-	-	3	3	-	3
23	Malicious damage	20	-	-	-	-	20	26	-	26
	TOTAL	788	139	41	20	21	589	806	80	886

